

Workshop

Ambiente e Salute: Interferenti Endocrini e Biorisanamento

Misura diretta *in vitro* del rischio da esposizione ad Interferenti Endocrini



DAMIANO GUSTAVO MITA

Laboratorio Nazionale Interferenti Endocrini - INBB - Napoli

Roma 14 Novembre 2014

MODELLI CELLULARI UTILIZZATI

ADIPOCITI umani
Bambini età pre-puberale non obesi

Coinvolgimento IE in patologie umane

Cellule ENDOMETRIALI
umane stromali ed epiteliali primarie

Cellule STAMINALI embrionali di ratto

BPA

BPA, BPF, TRICLOSAN

Modalità di azione
Pathways molcolari coinvolti

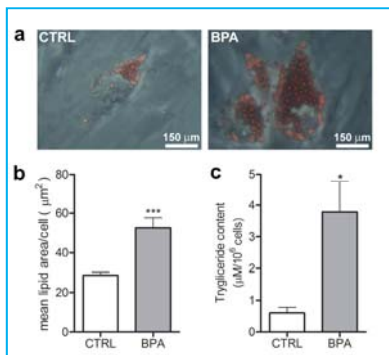
BPA, BPAF, BPS NP, OP DES, TCL

Marker disordini metabolici
Marker infiammazione
Accumulo lipidico citoplasmatico

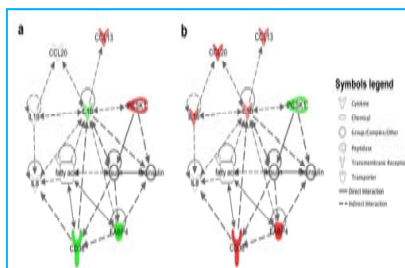
Marker decidualizzazione
Marker endometriosi

Proliferazione
Alterazioni morfologiche
Differenziamento

Lipid area and triglycerides content



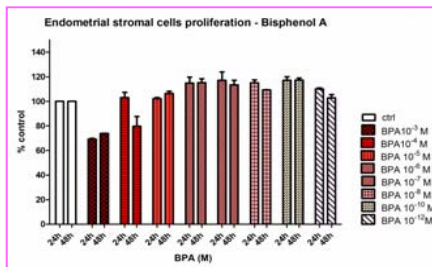
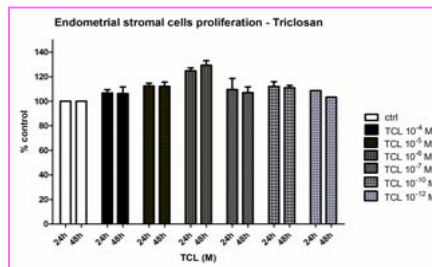
GeneChip Array



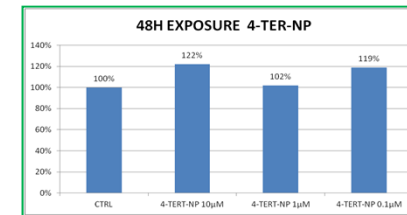
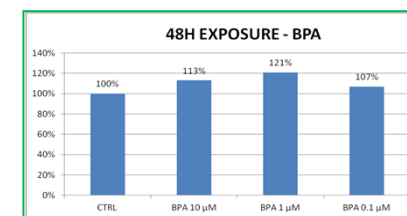
PCSK1 insulin production ↓

Citochine infiammatorie ↑

FABP4, CD36 ↑
Lipid metabolism

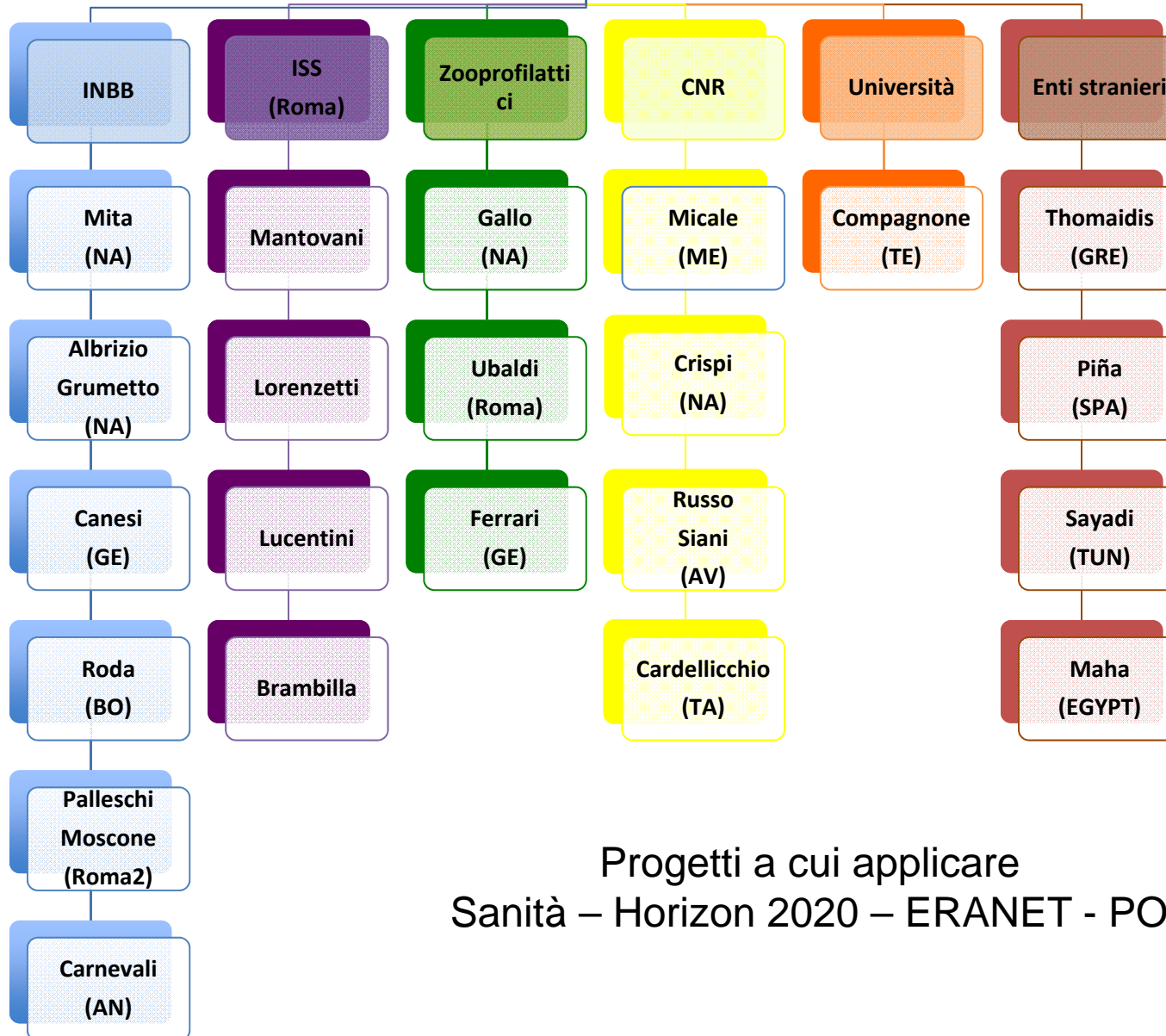


↑ Cell proliferation



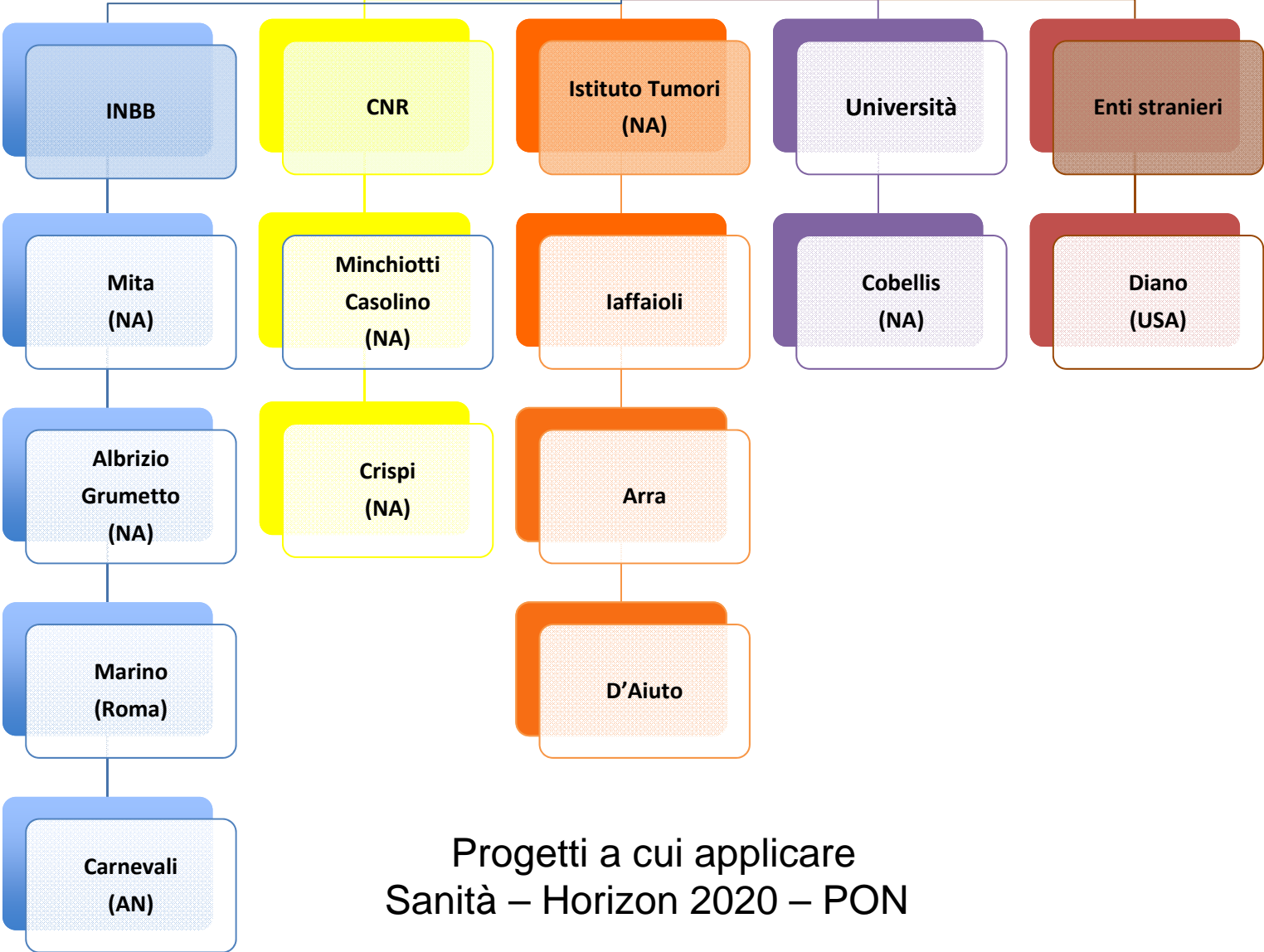
Robotized system (screening IE)

Food Safety and Risk Assessment
(From analytical approach to direct risk assessment)



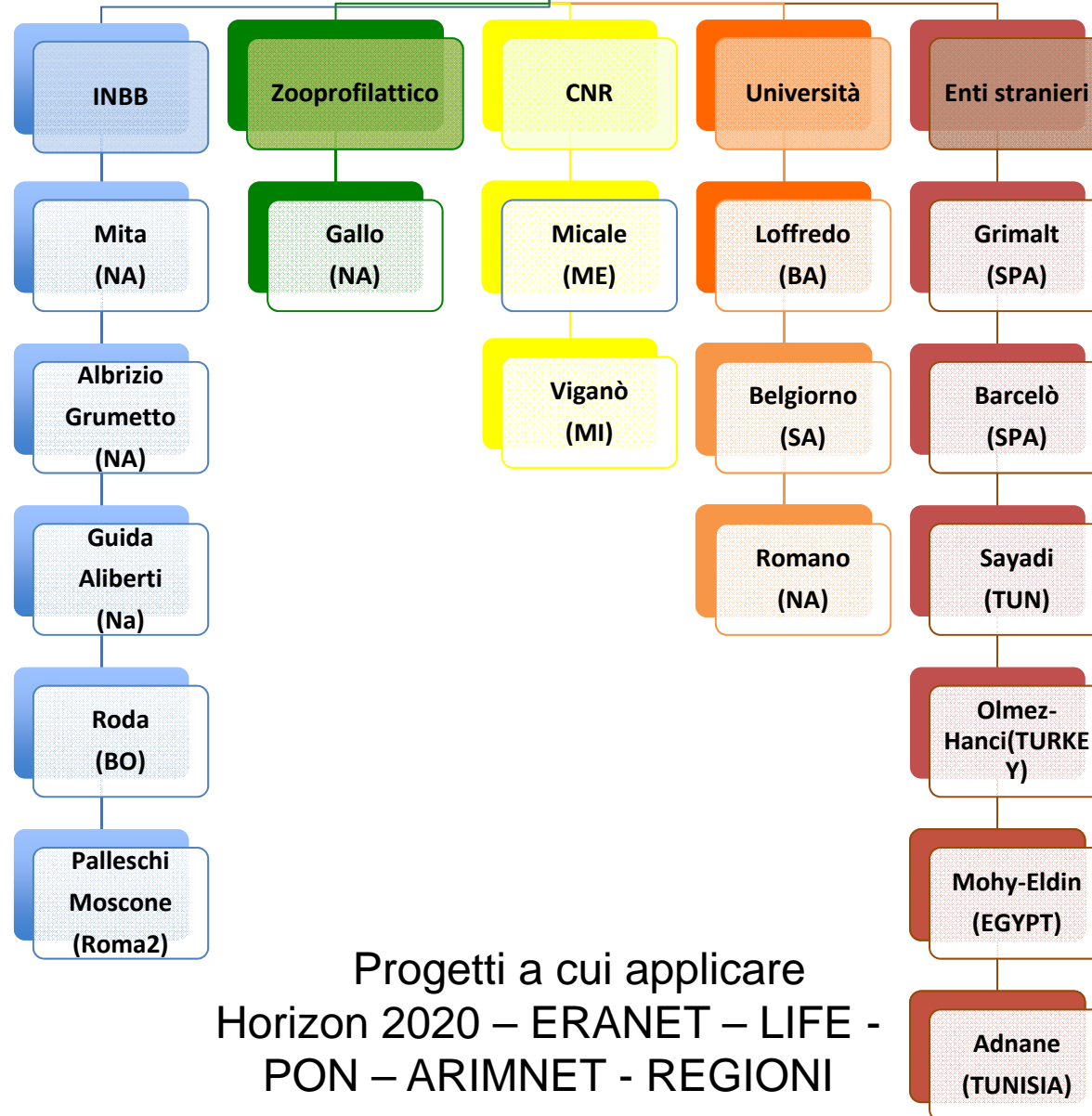
Progetti a cui applicare
Sanità – Horizon 2020 – ERANET - PON

Environment and Health
(From Stem Cells differentiation to endometriosis, obesity, mesothelioma and breast cancer)

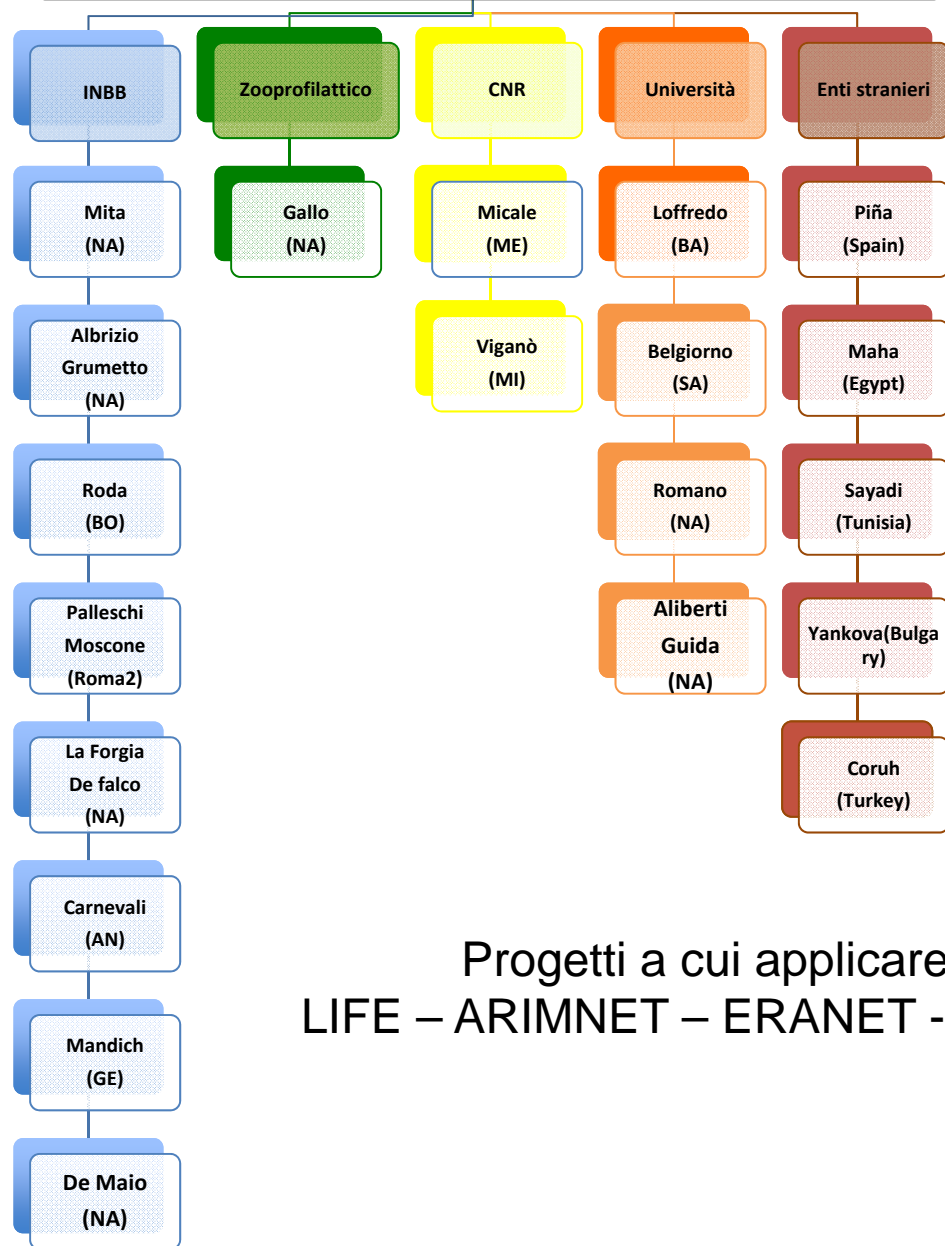


Progetti a cui applicare
Sanità – Horizon 2020 – PON

Water Management
(From remediation to pollution monitoring and Water reuse)



Mediterranean Basin
(From pollution recognition to biodiversity preservation)



Progetti a cui applicare
LIFE – ARIMNET – ERANET - ENPI